

Do you speak

Artificial Intelligence



In 2018, artificial intelligence is the queen.

What about you, do you speak AI ?

A CDEFGHIJKLMNOPQRSTUVWXYZ

Algorithm

Set of operating rules specific to a calculation; it is a series of formal rules intended to carry out an operation, to give a result.

API

Application Programming Interface, a standard set of methods by which software provides services to other software.

Artifact

Object shaped by the Human.

Artificial intelligence

A set of theories and techniques used to create machines capable of simulating intelligence.

B CDEFGHIJKLMNOPQRSTUVWXYZ

Big data

A large data set that goes beyond intuition and human analytical skills, as well as traditional computer tools for managing databases or information.

Bot

Diminutive of the word "Robot" which is governed by an [Algorithm](#).

Business intelligence

Computing set for the use of decision makers and business executives.

A **C** EFGHIJKLMNOPQRSTUVWXYZ

Chatbot

[Bot](#) able to hold a discussion.

Cobotics

Field of human-robot collaboration, ie interaction, direct or teleoperated, between man(s) and robot(s) to achieve a common goal.

Cognitive agents

Agents used in [Cognitive science](#) that are capable of reasoning close to the human being.

Cognitive computing

Simulation of the human thought process within a computer model.

Cognitive science

A set of scientific disciplines including neuroscience, artificial intelligence, psychology, philosophy, linguistics, anthropology ... Very broad transdisciplinary field focusing on human, animal and artificial thought.

Cognitivism

[Cognitive science](#) model based on symbols and rules.

Commodity

Refers to a basic product, of everyday consumption.

Connexionism

Model based on [Cognitive science](#) in the spirit of [Neural networks](#)

A **B** **D** EFGHIJKLMNOPQRSTUVWXYZ

Data clustering

Data analysis method of dividing a set of data into subsets each having their characteristic.

Data mining

Extraction of knowledge from data.

Data science

Discipline based on mathematical, statistical, computer and data visualization tools.

Data scientist

Responsible for the management, analysis and exploitation of data based on [Data science](#).

Deep learning

Learning technique based on deep [Neural networks](#), that is to say made up of many overlapping layers.

Decoder

An element of the signal processing chain responsible for recovering it after passing through a noisy channel.

A **B** **C** **E** GHIJKLMNOPQRSTUVWXYZ

Expert Systems

Systems governed by [Algorithms](#) that make decisions based on rules and facts.

A **B** **C** **D** **F** H IJKLMNOPQRSTUVWXYZ

Field-Programmable Gate Array (FPGA)

Integrated circuit that can be programmed after its manufacture.

A **B** **C** **D** **E** **G** IJKLMNOPQRSTUVWXYZ

Graphics Processing Unit (GPU)

Processor specialized in signal processing.

A **B** **C** **D** **E** **F** **G** **I** KLMNOPQRSTUVWXYZ

Intelligent agent

Autonomous entity which observes through sensors and acts upon an environment using actuators and directs its activity towards achieving goals; intelligent agents may also learn or use knowledge to achieve their goals.

A **B** **C** **D** **E** **F** **G** **H** **I** **J** **K** **L** **M** **N** **O** **P** **Q** **R** **S** **T** **U** **V** **W** **X** **Y** **Z**

Low AI

Such intelligence is effective only in one area, it can only tackle a task of its own.

A **B** **C** **D** **E** **F** **G** **H** **I** **J** **K** **L** **M** **N** **O** **P** **Q** **R** **S** **T** **U** **V** **W** **X** **Y** **Z**

Machine learning

Domain of [Artificial intelligence](#), it relies on [Algorithms](#) providing learning capabilities to computers: it aims to teach machines to perform certain tasks, often predictive, from masses of data.

A **B** **C** **D** **E** **F** **G** **H** **I** **J** **K** **L** **M** **N** **O** **P** **Q** **R** **S** **T** **U** **V** **W** **X** **Y** **Z**

Natural Language Processing

A multidisciplinary field involving linguistics, computer science and [Artificial intelligence](#). It aims to create tools for natural language processing for various applications.

Neural network

Mathematical and computer representation of biological neurons and their connections.

A **B** **C** **D** **E** **F** **G** **H** **I** **J** **K** **L** **M** **N** **O** **P** **R** **S** **T** **U** **V** **W** **X** **Y** **Z**

Prediction

The process of determining what will happen in the future.

Predictive analysis

Techniques from statistics, [Data mining](#) and game theory to build hypotheses.

Prevision

Process of determining the evolution of a situation according to a state at a moment: we are in the approximation.

A **B** **C** **D** **E** **F** **G** **H** **I** **J** **K** **L** **M** **N** **O** **P** **Q** **S** **U** **V** **W** **X** **Y** **Z**

Semantic network

Graph modeling the representation of knowledge.

Strong AI

Such intelligence performs well in multiple areas with expanded capabilities in those where humans have them.

Supervised learning

[Machine learning](#) task to refine a prediction function from examples given by human intervention.

A **B** **C** **D** **E** **F** **G** **H** **I** **J** **K** **L** **M** **N** **O** **P** **Q** **R** **T** **V** **W** **X** **Y** **Z**

Turing test

Alan Turing is the forerunner of [Artificial intelligence](#). In 1950, he developed a test that consisted of putting a human in verbal confrontation to the blind with a computer and another human.

A **B** **C** **D** **E** **F** **G** **H** **I** **J** **K** **L** **M** **N** **O** **P** **Q** **R** **S** **U** **W** **X** **Y** **Z**

Unsupervised learning

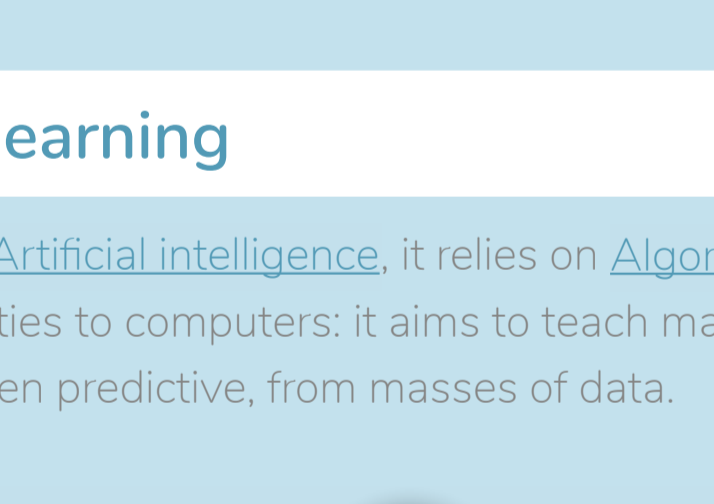
Unlike [Supervised learning](#), the algorithm does not require human intervention and includes only the data.

A **B** **C** **D** **E** **F** **G** **H** **I** **J** **K** **L** **M** **N** **O** **P** **Q** **R** **S** **T** **V** **W** **X** **Y** **Z**

Value sensitive design

A theoretical approach to technology design that considers human values in a holistic and principled way.

Lexicon about artificial intelligence proposed by



www.predify.co